



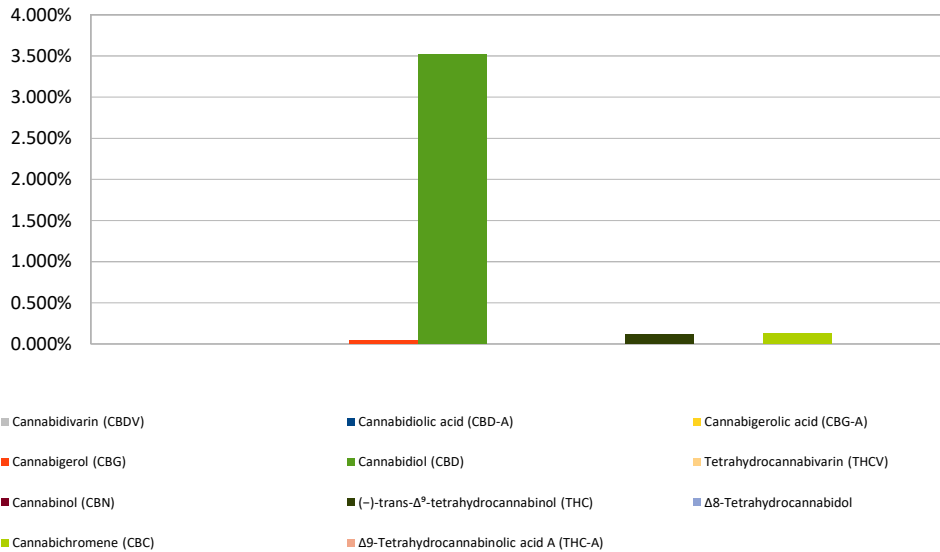
Cannabinoid Profile

Customer: Banner Harvest
Customer Sample ID: MCT Full Spectrum
Laboratory Number: 201906-0055
Extraction Technician: CB
Analytical Chemist: CB
Servings per Bottle: 29.6
Density: 0.946

Extraction Date(s)	Analysis Date(s)
6/3/2019	6/3/2019

Cannabinoid (HPLC)	Results			
	LOD mg/g	Percent	mg/mL	mg/Fluid oz.
Cannabidiol (CBD)	<0.1			
Cannabidiol (CBD)	<0.1			
Cannabidiol (CBD)	<0.1			
Cannabigerol (CBG)		0.040%	0.40	12.0
Cannabidiol (CBD)		3.522%	35.22	1041.7
Tetrahydrocannabivarin (THCV)	<0.1			
Cannabinol (CBN)	<0.1			
(-)-trans- Δ^9 -tetrahydrocannabinol (THC)		0.117%	1.17	34.5
Δ^8 -Tetrahydrocannabinol	<0.1			
Cannabichromene (CBC)		0.131%	1.31	38.7
Δ^9 -Tetrahydrocannabinolic acid A (THC-A)	<0.1			
Cannabinoids Total		Percent	mg/mL	
Max Active THC		0.12%	1.17	
Max Active CBD		3.52%	35.22	
T. Active Cannabinoids		3.81%	38.10	
Total Cannabinoids		3.81%	38.10	
Ratios				
30.23 :1 CBD to THC		0.03 :1 THC to CBD		

Cannabinoid (%)



Altitude Consulting, LLC utilizes NIST traceable Reference Standards and Certified Reference Material to calibrate analytical instruments along with proven analytical methods. The methods are applied in the most ethical manner following good laboratory practice guidelines. The results of this report are based solely on the sample submitted and cannot be reproduced.

This report expires 30 days after analysis date.